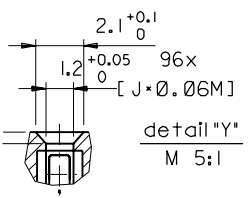
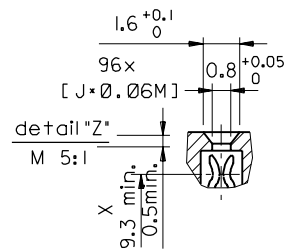
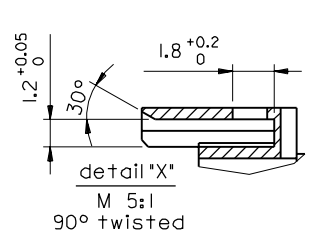
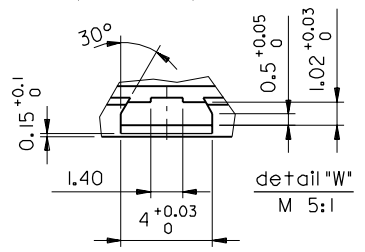
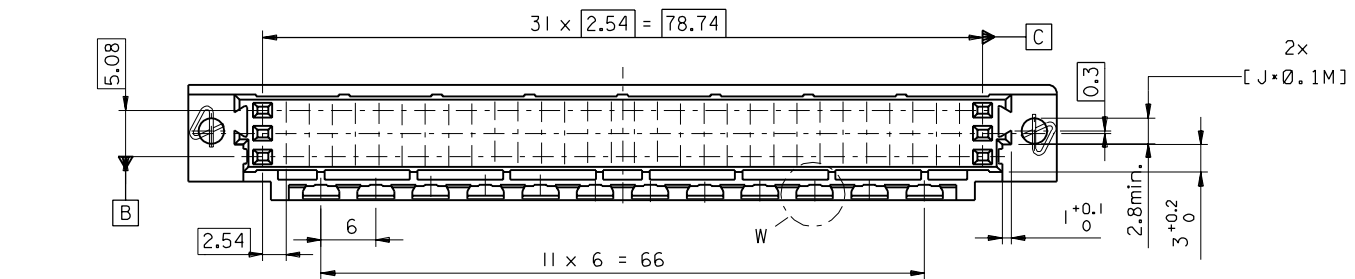
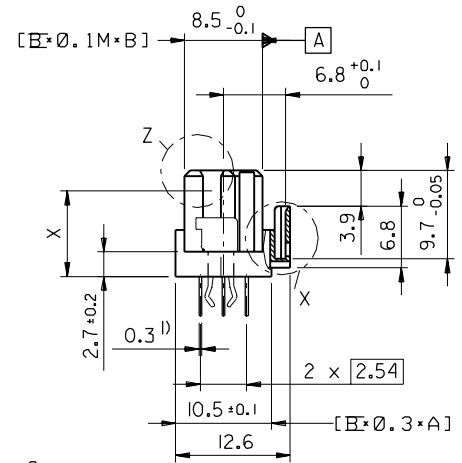
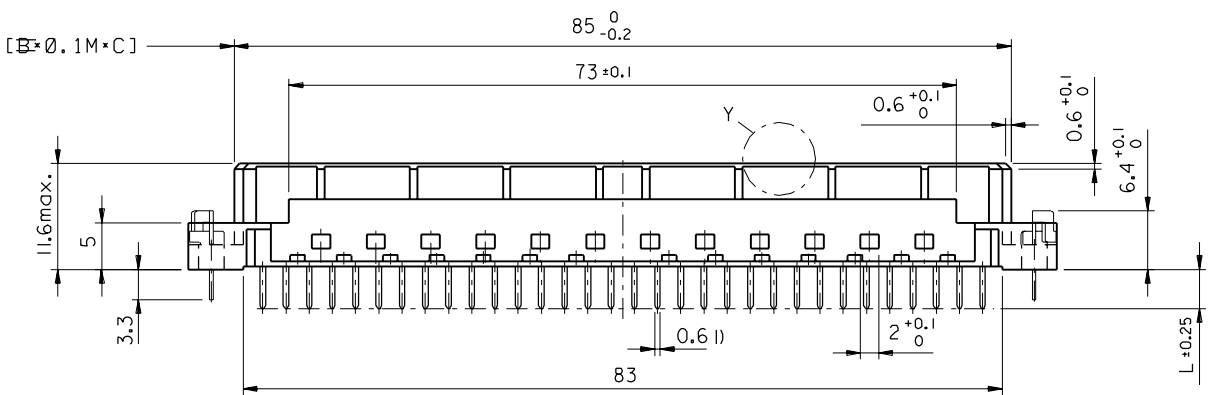


l) tails to fit in PC-board layout



|   |          |                           |  |   |      |
|---|----------|---------------------------|--|---|------|
| FIRST ANGLE PROJECTION  |          | REVISE ONLY ON CAD SYSTEM |  | SH.   | REV. |
| UNLESS OTHERWISE SPECIFIED TOLERANCES: ANGULAR ± 2°                               | DRWG BY  | CAD/CAM PROJECT NAME      |  | THIS DRAWING CONTAINS INFORMATION THAT IS PROPRIETARY TO MOLEX INC. & SHOULD NOT BE USED WITHOUT WRITTEN PERMISSION |      |
| INCH  | KN       | 85042000 s12              |  |   |      |
| METRIC  | CHK'D BY | TITLE                     |  |   |      |
| 3 PLACE ±   | Ca       | 96 pos. female connector  |  |   |      |
| 2 PLACE ±   | APP'D BY | DIN 41612 style C, + clip |  |   |      |
| 1 PLACE ±   | JB       | with coding, dimensions   |  |   |      |
| DRAFT WHERE APPLICABLE MUST REMAIN WITHIN DIMENSIONS                              | SCALE    | MOLEX MOLEX EUROPE        |  | SHEET NO. DATE  |      |
| DESIGN DIMENSION <input checked="" type="checkbox"/> MM                           | 2:1      | PART NO.                  |  | 2 of 2 96/04/30   |      |
| EQUIVALENT DIMENSION <input type="checkbox"/> MM                                  |          | DWG NO.                   |  | SIZE  |      |
| IF TWO DIMENSIONS ARE SHOWN THE UPPER IS THE DESIGN DIMENSION, LOWER IS SECONDARY |          | SDA-85042-0001            |  | B   |      |

ECN MG1998-2583  
Schraube, Lochbild  
97-09-17 KN

REVISIONS

LTR

