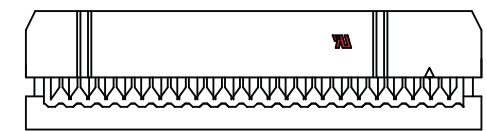
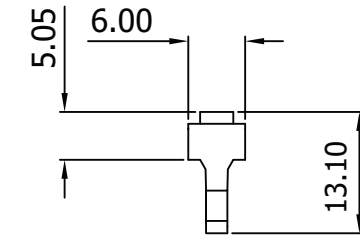
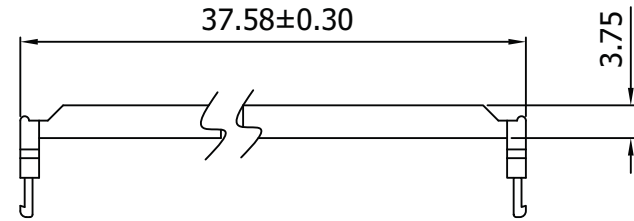
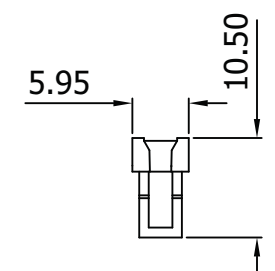
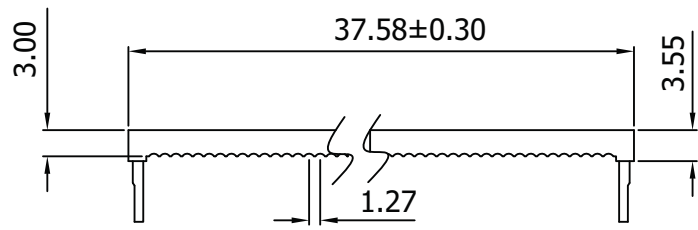


A



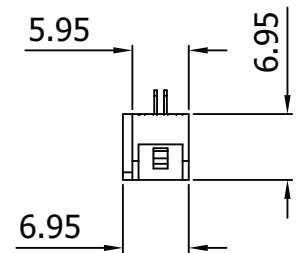
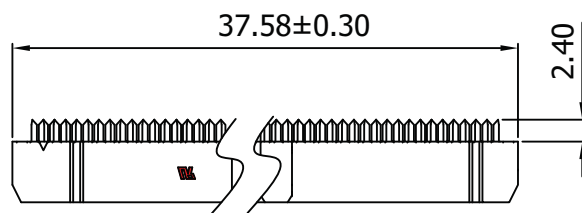
A

B



B

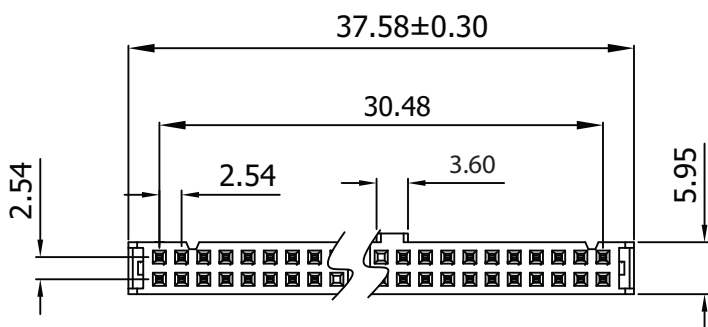
C



C

D

E



Material:

- Insulator: P.B.T. 30% Glass Fiber, UL 94V-0
- Contact Material: Phosphor Bronze, Gold flash over Nickel

Electrical:

- Current Rating: 1Amp
- Insulation Resistance: 1,000MΩ Min.
- Contact Resistance: 30MΩ Max.
- Dielectric Withstanding: 500V AC
- Operating Temperature: -40°C ~ +85°C

D

E

F

Unit: MM±0.20MM

F

G

Scale	1:1					Name	Item No.	
TOLERANCE					Drawn	10.19.11	AWP26-7241-T-R	
X.X	±0.40				Approved	Chappell		
X.XX	±0.25							
X.XXX	±0.15							
Angle	±3°							
		Modification	Date	Name			Title IDC-Socket - 2.54MM Pitch, Gold Flash, Central Lug w/Strain Relief, 26 Contacts	
							Drawing No.	rev00
							Replace	



G

H

H