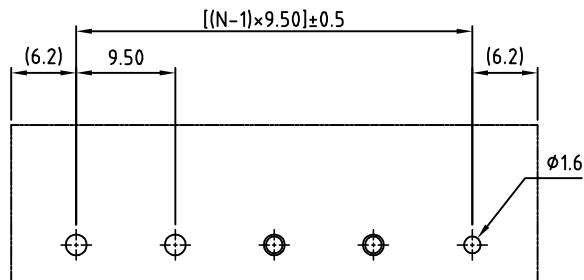
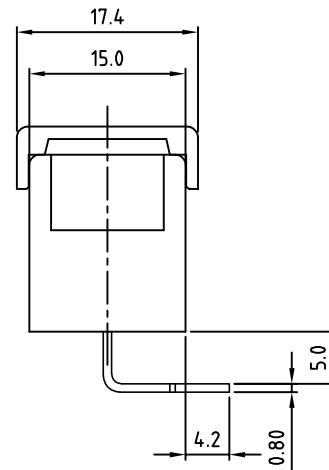
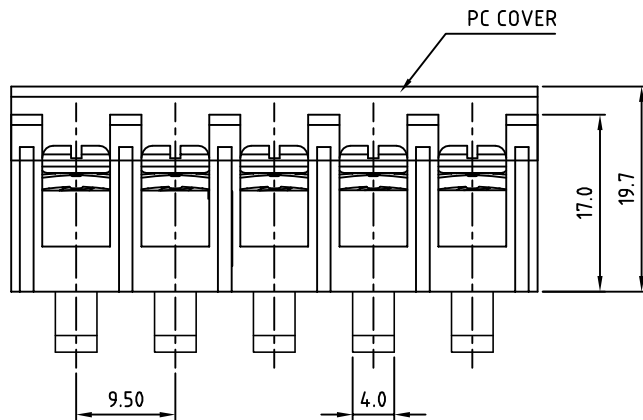


N=Number of poles



P.C.B LAYOUT

SIGN	DATE	DESCRIPTION	APPROVER
THIS IS CAD DRAWING, DO NOT REVISE MANUALLY!!!			

SPECIFICATIONS

VOLTAGE & CURRENT:	300 V, 20 A
WITHSTANDING VOLTAGE:	AC 2000 V/Min
INSULATION RESISTANCE:	1000 MΩ OR MORE AT DC 500 V
TEMPERATURE RANGE:	-40 °C ~+105 °C
SCREW TORQUE VALUE:	12 Lb-In.
WIRE RANGE:	22 - 12AWG
1) MOLDED PARTS:	THERMOPLASTIC, UL 94 V-0 BLACK
2) TERMINAL:	BRASS, 0.8t, Tin PLATED
3) TERMINAL SCREWS:	STEEL, Ni PLATED, M3.5
4) COVER MATERIAL:	PC
APPROVAL:	CSULUS

RoHS Compliant

PART NUMBER: OSTYK503XX230

NO. OF POLES
 02: 2 POLES
 03: 3 POLES
 04: 4:POLES

30: 30 POLES

THESE DRAWINGS AND SPECIFICATIONS ARE THE PROPERTY OF ON-SHORE TECHNOLOGY, INC. AND SHALL NOT BE REPRODUCED, COPIED OR USED IN ANY MANNER WITHOUT THE PRIOR WRITTEN CONSENT OF ON-SHORE TECHNOLOGY, INC.



TITLE		OSTYK-503 Without Flange Series, 2-30 Pole				
PART NO.		OSTYK503XX230		DWG NO.		OSTYK503XX230.DWG
APPROVED	CHECKED	DESIGNED	DRAWN	CUST NO.	Tolerance	
Shi Jun 2007.07.18	Seamus 2007.07.18	LUCY 2007.7.18	LUCY 2007.7.18		X. ±0.50	
					UNIT: mm	
					SCALE: NONE	
				SHEET: 01/01	REV.: B	
				X.X ±0.30		
				X.XX ±0.10		
				X° ±1°		