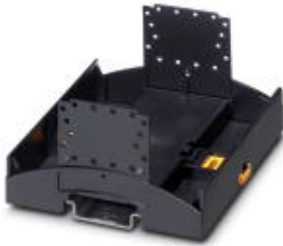


# Mounting base housing - BC 107,6 UT HBUS BK - 2896270


Please be informed that the data shown in this PDF Document is generated from our Online Catalog. Please find the complete data in the user's documentation. Our General Terms of Use for Downloads are valid (<http://download.phoenixcontact.com>)



Lower part for installation housing BC, 107,6...



## Key commercial data

Packing unit	0
Minimum order quantity	10
Catalog page	Page 581 (CC-2011)
GTIN	 4 046356 096720
Custom tariff number	85472000
Country of origin	GERMANY

## Technical data

### General

Housing type	Installation component housing
Housing material	polycarbonate
Color	black

### Dimensions / positions

Length	89.7 mm
Constructional height	49 mm
Width	107.6 mm

### Technical data

Ambient temperature (operation)	-40 °C ... 125 °C
Inflammability class according to UL 94	V0
Power dissipation at 20°C in the horizontal mounting position	13.08 W

# Mounting base housing - BC 107,6 UT HBUS BK - 2896270

## Classifications

### ETIM

ETIM 2.0	EC001031
ETIM 3.0	EC001031
ETIM 4.0	EC001031
ETIM 5.0	EC001031

### UNSPSC

UNSPSC 11	31261501
UNSPSC 12.01	31261501
UNSPSC 13.2	31261501
UNSPSC 6.01	31261501
UNSPSC 7.0901	31261501

### eCl@ss

eCl@ss 4.0	27180401
eCl@ss 4.1	27180401
eCl@ss 5.0	27180506
eCl@ss 5.1	27180506
eCl@ss 6.0	27180802
eCl@ss 7.0	27182702

## Approvals

### Approvals

---

Approvals

UL Recognized / GOST

---

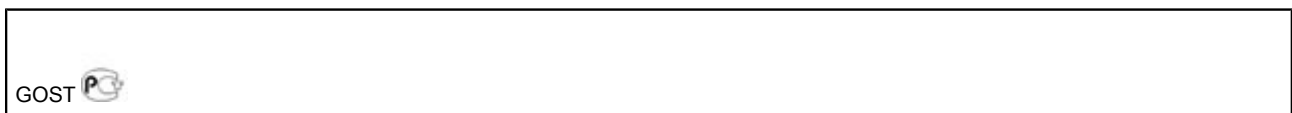
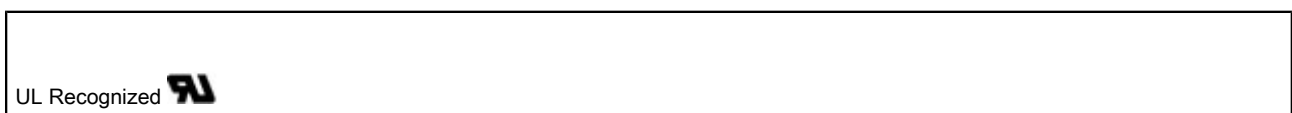
Ex Approvals

---

Approvals submitted

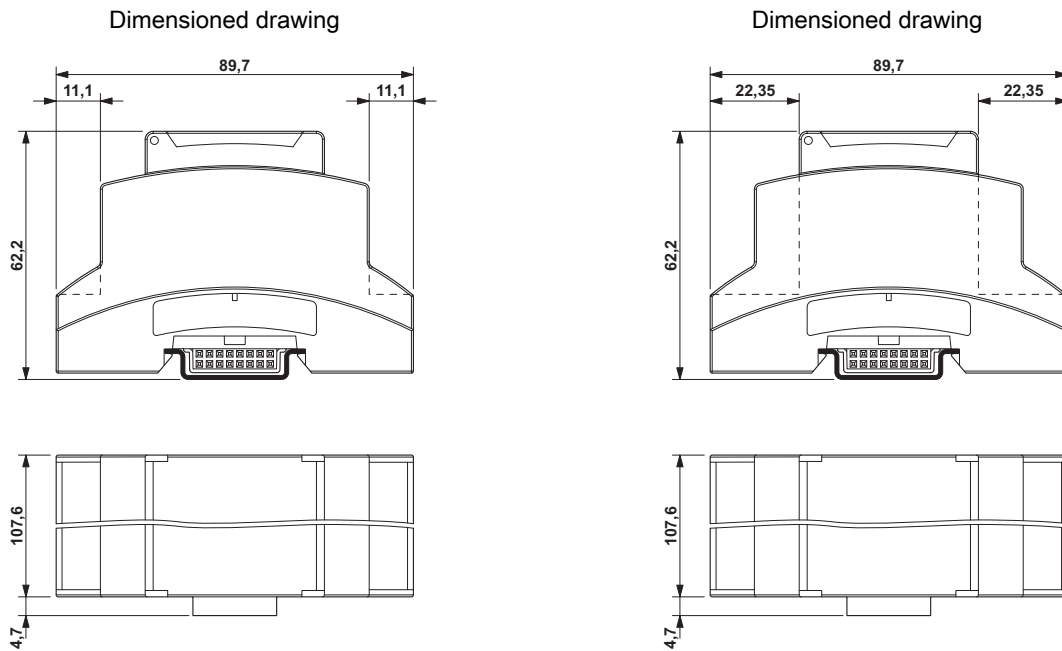
---

### Approval details



# Mounting base housing - BC 107,6 UT HBUS BK - 2896270

## Drawings



The dimensional drawing shows the item along with the lower part of the housing (terminal installation depth 11.1 mm) and the housingpart of the housing (terminal installation depth 22.35 mm) and the housing cover