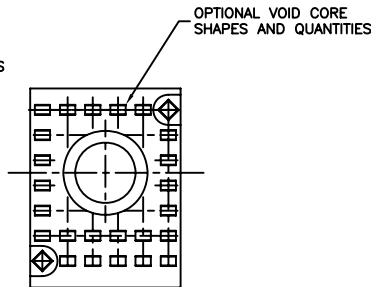
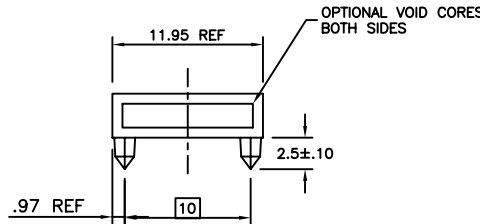
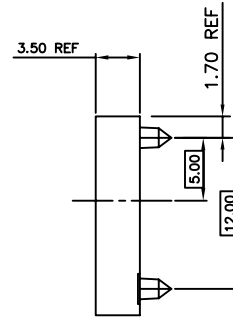
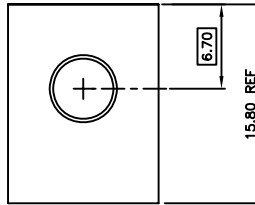
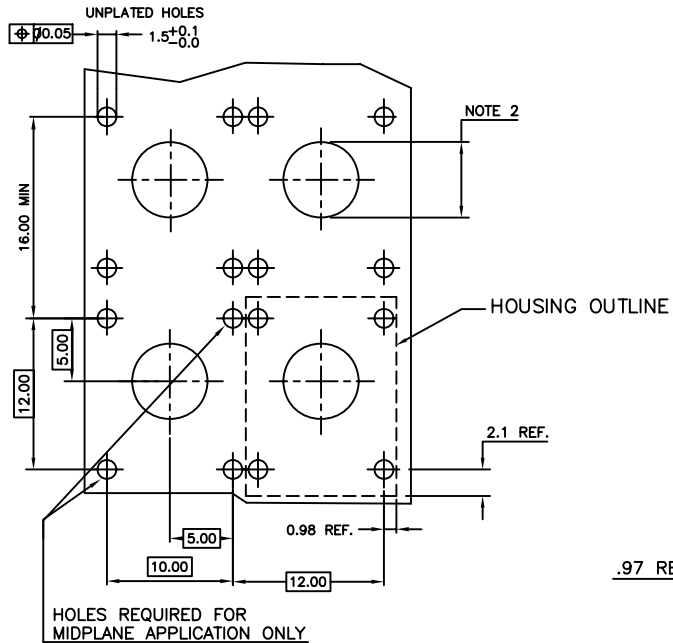


PRODUCT NO
63735-101
63735-101LF



RECOMMENDED P.C.B. HOLE PATTERN.

NOTES

1. MATERIAL: LCP, 30% GLASS FILLED, FLAME RETARDANT ACC. TO UL 94-V0 COLOR: NATURAL
2. -WHEN USED WITH GUIDE PIN, HOLE DIAMETER TO BE 3.25±0.10 AND UNPLATED.
-WHEN USED WITH STR. SCREW-TO-BOARD HIGH POWER INSERT, HOLE DIAMETER TO BE 3.25±0.10 AND PLATED WITH 5.00 MIN. PAD DIAMETER.
-WHEN USED WITH A PLUG/PLUG HIGH POWER COUPLER OR A RECEPTACLE/RECEPTACLE COAX COUPLER, HOLE DIAMETER TO BE 6.00+0.10/-0.00 AND UNPLATED.
3. MAX. FLASH 0.1MM
4. LEAST MATERIAL CONDITION ACC. TO ANSI Y14.5

5. FOR LEAD FREE NUMBERS, ADD AN 'LF' SUFFIX. PART NUMBERS THAT DO NOT END IN 'LF' ARE LEAD FREE. EXAMPLE: 63735-101LF
 6. THE PRODUCTS WHERE THE PART NUMBER ENDS IN LF AND THE NONE LF PART NUMBERS MEET THE EUROPEAN UNION DIRECTIVES AND OTHER COUNTRY REGULATIONS AS DESCRIBED IN GS-22-008.
 7. ALL PRODUCTS WILL WITHSTAND EXPOSURE TO 260°C FOR 60 SECONDS IN A CONVECTION, INFRA-RED OR VAPOUR PHASE REFLOW OVEN.
- | | | | |
|---|----------|-----|---------|
| A | V90642 | MDF | 6/3/99 |
| B | V91703 | MDF | 7/19/99 |
| C | V94015 | MDF | 9/22/99 |
| D | V00020 | JWS | 1/25/00 |
| E | V05-0458 | TAB | 5/16/05 |
| F | V06-0077 | JRV | 3/14/06 |

mat'l. code				surface		tolerance		projection		product family	
NOTE 1				ASME Y14.5		ASME Y14.5		MM		METRAL (tm)	
ltr	ecn no	dr	date	tolerances unless otherwise specified				MM		title	
D	V00020	JWS	2000-07-25	angles	deg	X*3		MM		4 ROW HYBRID HEADER HSG.	
E	V05-0458	TAB	2005-05-16	flatness	mm	XX*13		MM		COAX, W/O WALLS, 12mm	
F	V06-0077	JRV	2006-03-14	parallelism	mm	0° ±2'		MM		scale 2.25:1	
G	V06-0606	JRV	2006-06-21	dr	M. FETROW	1999-06-03	FCI		dwg no		sheet 1 of 1
				engr	D. McCLUNE	1999-06-03			63735		A4
				chr	D. McCLUNE	1999-06-03			type		CUSTOMER Drawing
				appd	D. McCLUNE	1999-06-03					
sheet index	revision sheet	G	1								