

**Technical specification:**

Rated voltage:	4pos	5pos	8pos
IEC 61076-2-101	250 V	60 V	30 V
Current rating:	4/5pos	8pos	
IEC 61076-2-101	4 A at 40°C	2 A at 40°C	
Insulation resistance:	≥100 MΩ		
IEC 60512			
Pollution degree:	3/2		
IEC 60664-1			
Degree of protection:	IP 67, in mated condition		
IEC 60529			
Temperature range:	-30°C ... +80°C		
IEC 60664-1			
Mating cycles:	≥100		
IEC 60512-9a			

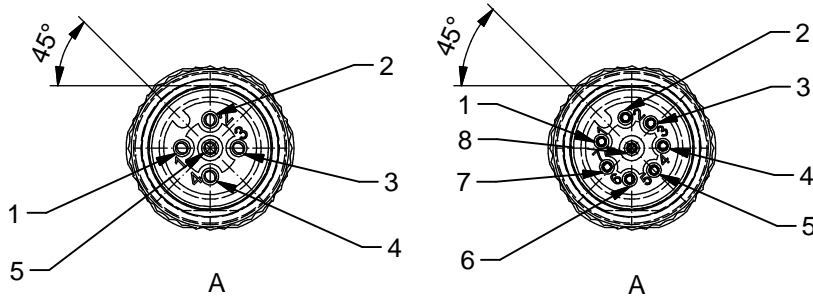
**Materials:**

Contact:	CuZn
Contact plating:	Nickel, gold plated
Contact carrier:	TPU GF, UL 94
Sealing:	FKM, NBR
Counternut:	GD-Zn, Nickel plated
Socket housing:	CuZn, Nickel plated
Grouting:	Polyurethane-resin, UL 94

**Installation specification:**

Recommended torque:	* M12x1: 0,6 Nm
	** M12x1: 1-1,2 Nm

Conec installation tool: Torque wrench: 36-000200  
 Insert across flats 13: 36-000220  
 Insert across flats 17: 36-000230

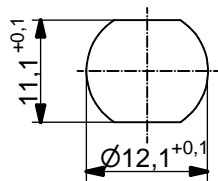
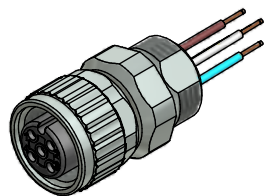


**Contact assignment:**

- 1) brown
- 2) white
- 3) blue
- 4) black
- 5) green-yellow

**Contact assignment:**

- 1) white
- 2) brown
- 3) green
- 4) yellow
- 5) grey
- 6) pink
- 7) blue
- 8) red



Minimum wall thickness 1,5mm, alternativ panel cut-out d=12,1

Part no:	Description:	Pol	Length L:	Wire:
43-01493	SAL - 12 - FKD4 - 0,05 - 12	4	0,05m	AWG 24 PVC, UL
43-xxxxx	SAL - 12 - FKD4 - ... - 12	4	x	
43-01494	SAL - 12 - FKD5 - 0,05 - 12	5	0,05m	
43-xxxxx	SAL - 12 - FKD5 - ... - 12	5	x	
43-01495	SAL - 12 - FKD8 - 0,05 - 12	8	0,05m	
43-xxxxx	SAL - 12 - FKD8 - ... - 12	8	x	

DO NOT ALTER CAD DRAWING BY HAND Directive 2002/95/EC RoHS compliant	Index: c 18.08.11 fro Ä3914 Data sheet revised, technical specification changed, Sleeve side B removed, Couplingnut modified	dim. in mm	title: <b>Female socket M12x1 with wires, frontmounting turnable</b>										
		<table border="1" style="width: 100%; border-collapse: collapse;"> <tr> <td style="width: 30px;"></td> <td style="width: 100px;">date</td> <td style="width: 100px;">name</td> </tr> <tr> <td>drawn</td> <td>27.10.09</td> <td>Fromm</td> </tr> <tr> <td>appd.</td> <td>27.10.09</td> <td>Mankopf</td> </tr> </table>				date	name	drawn	27.10.09	Fromm	appd.	27.10.09	Mankopf
		date	name										
	drawn	27.10.09	Fromm										
appd.	27.10.09	Mankopf											
tolerance of wire: L ≤ 0,5m: L + 20mm L > 0,5m: L + 4%			part no:										
general tolerance: 0 ± 0,50mm 0,0 ± 0,25mm 0,00 ± 0,10mm					THIS DRAWING MAY NOT BE COPIED OR REPRODUCED IN ANY WAY, AND MAY NOT BE PASSED ON TO A THIRD PARTY WITHOUT WRITTEN PERMISSION. OWNERSHIP AND COPYRIGHT OF CONEC GmbH								