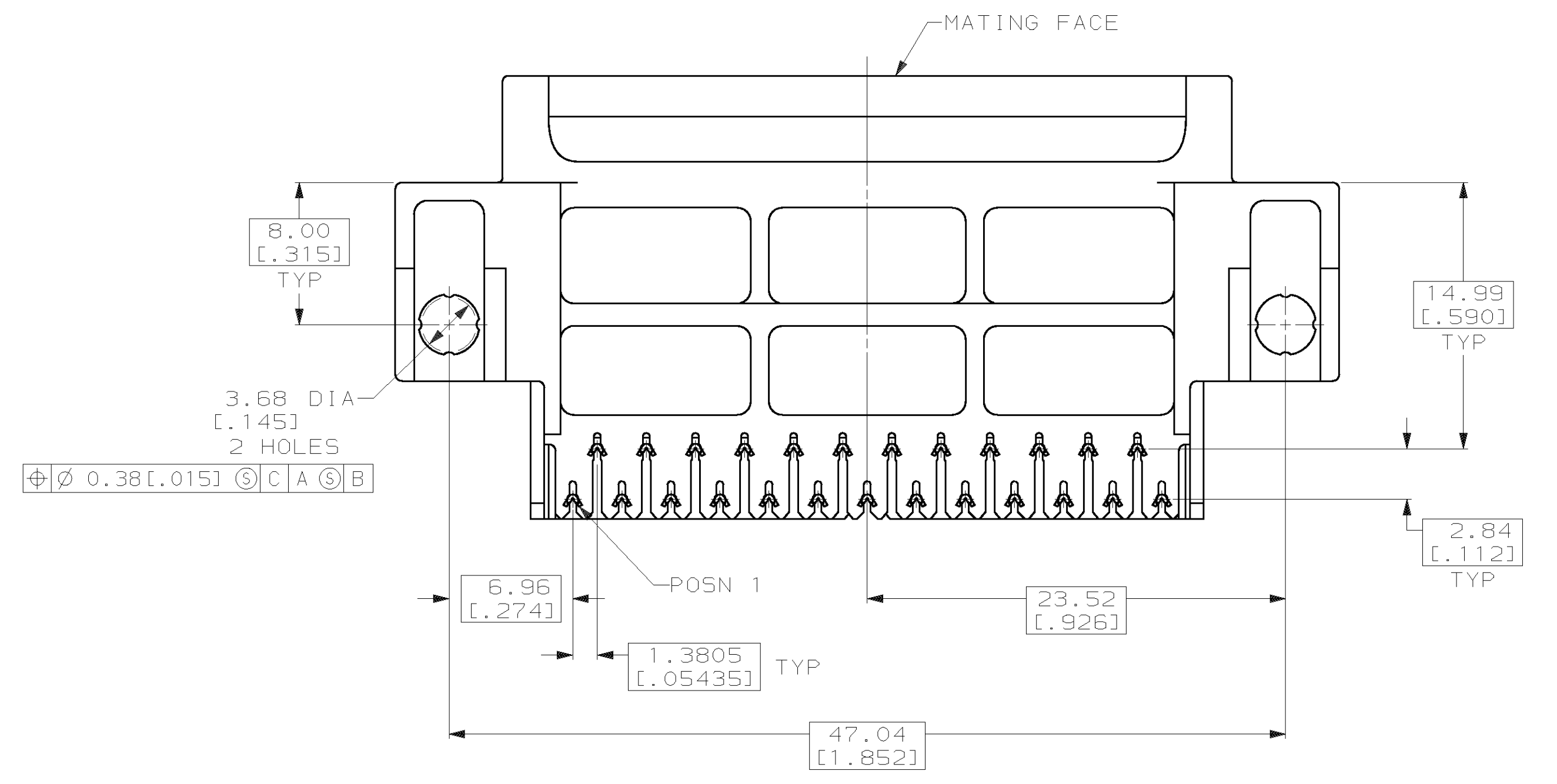
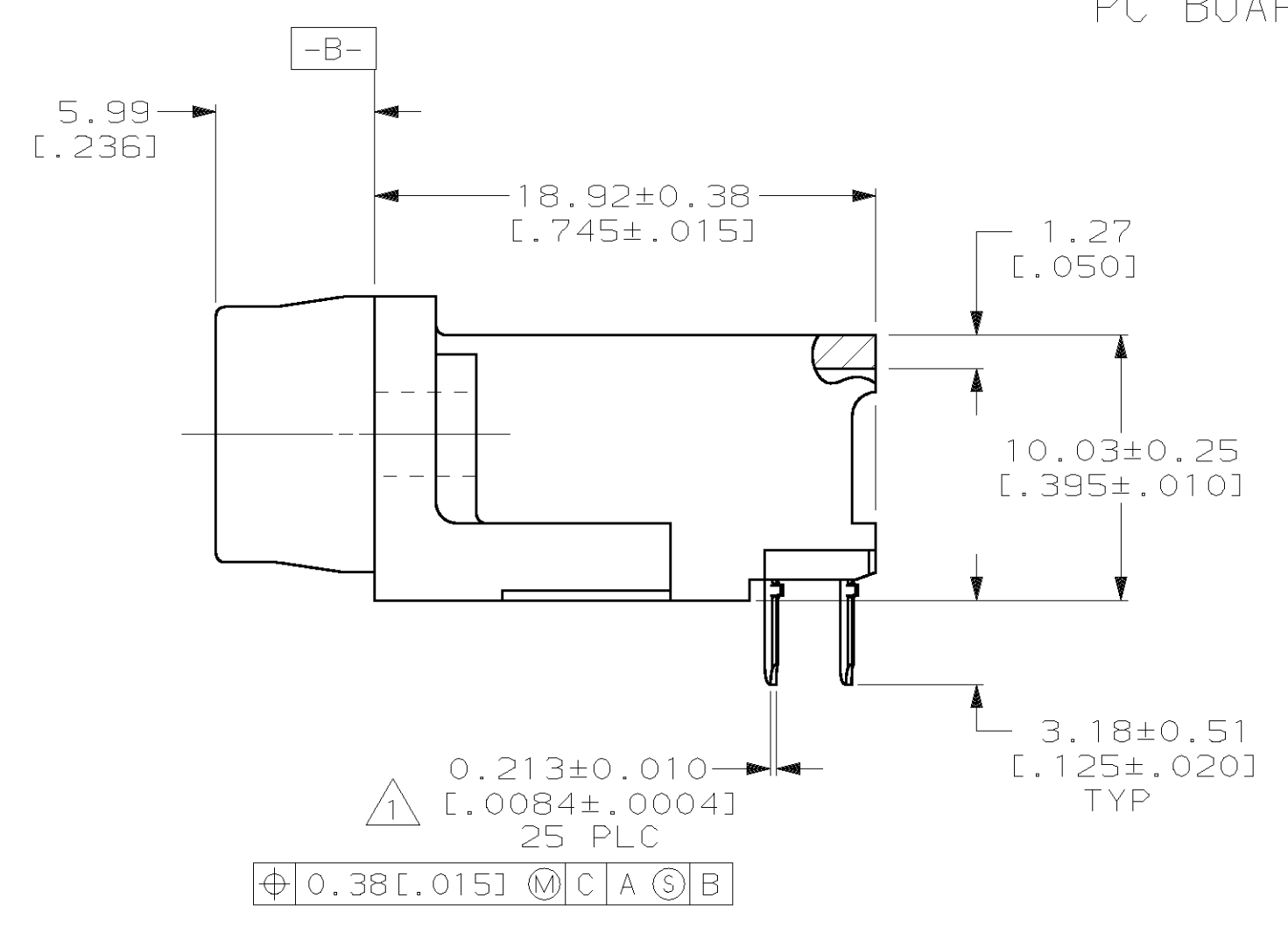
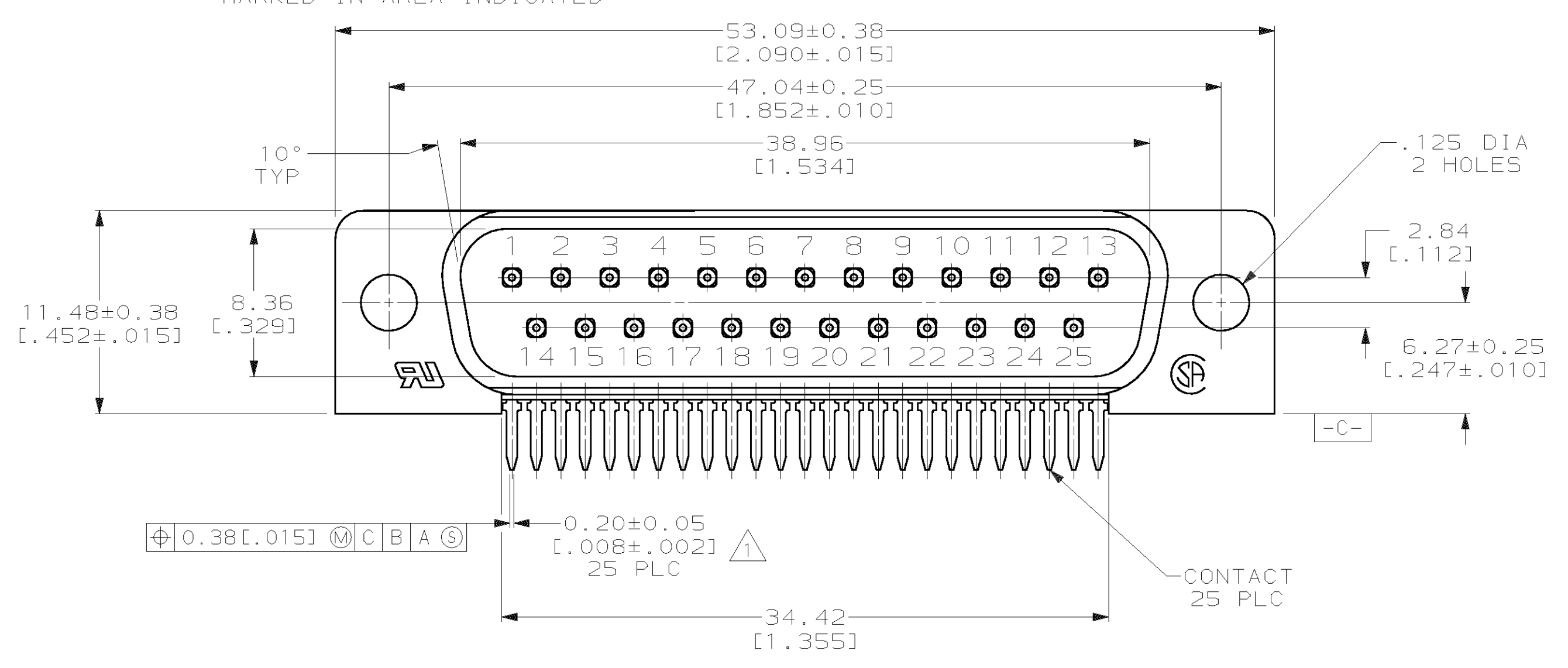
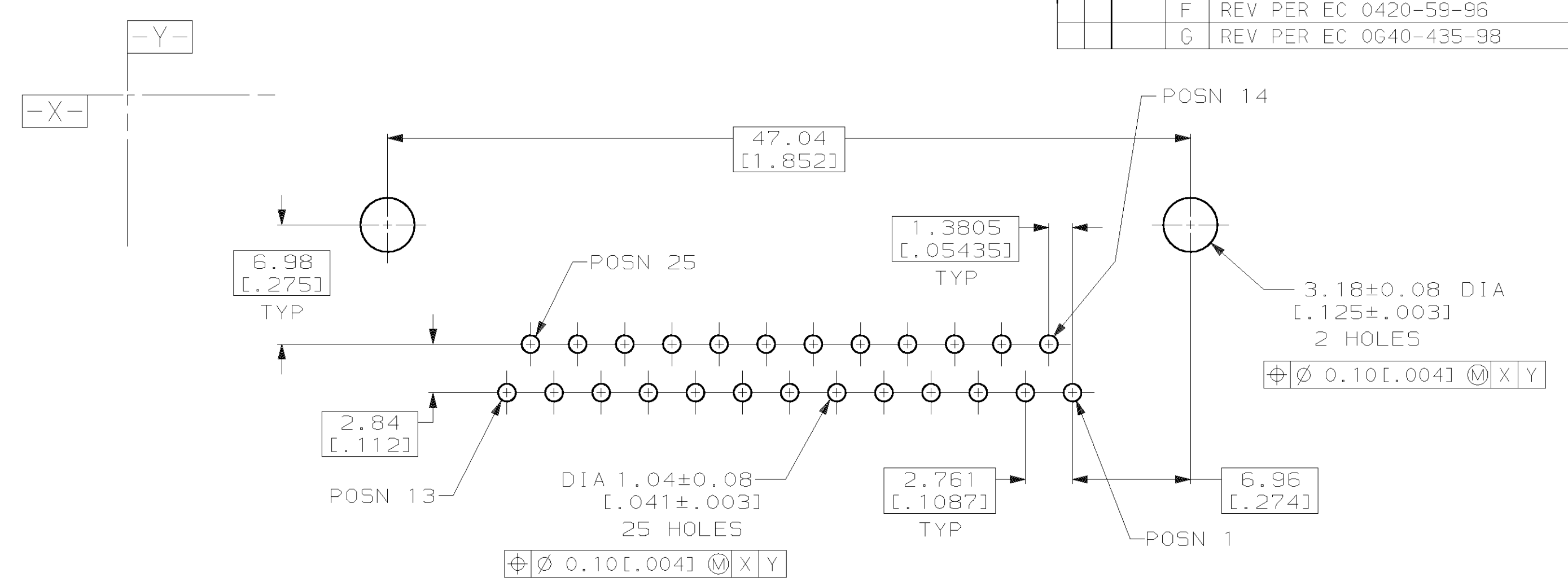
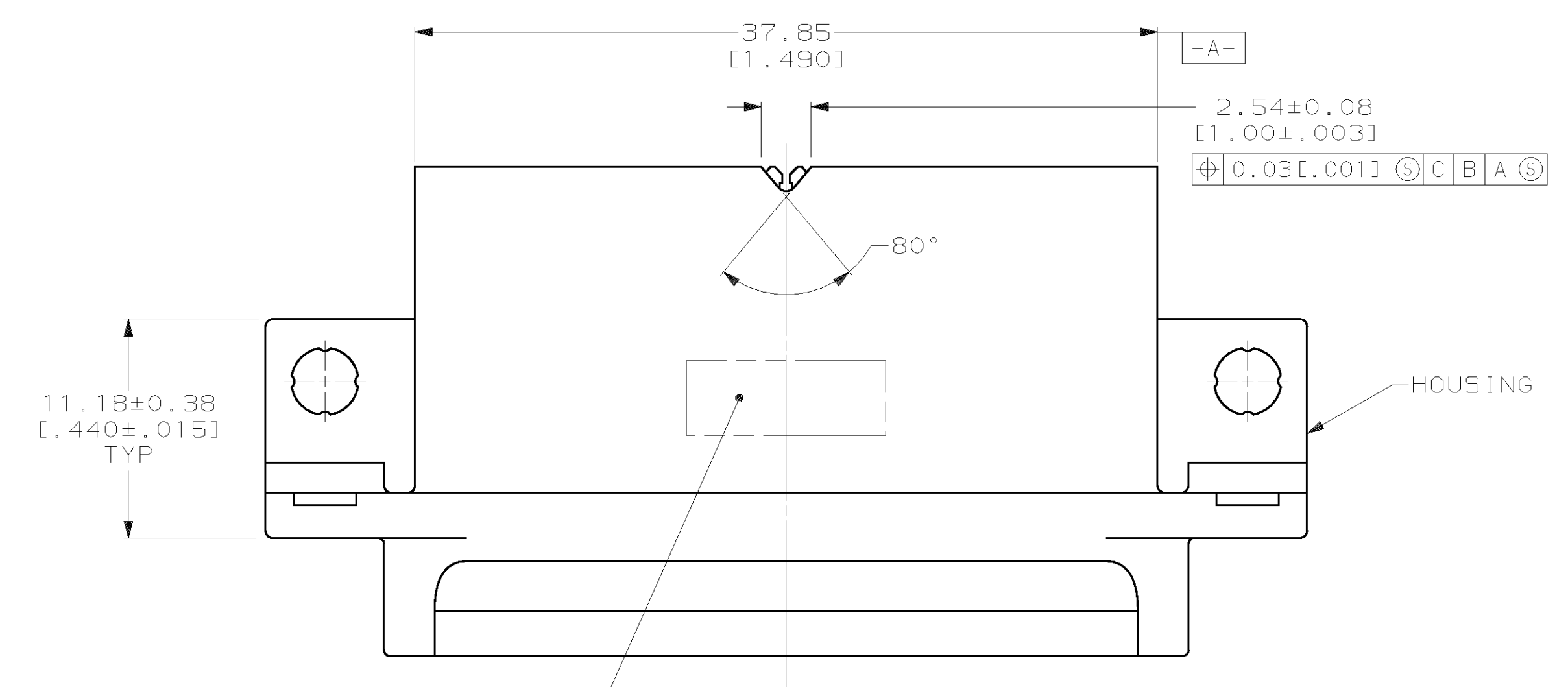


LOC		DIST		P		ZONE		LTR		REVISIONS		DATE	APPR
BD	77									DESCRIPTION			
										E	REV PER EC 0020-1053-95	05 JAN 96	RLT
										F	REV PER EC 0420-59-96	20 SEP 96	RT
										G	REV PER EC 0640-435-98	17 MAR 99	RT



- ① POSITION TOLERANCE APPLIES AT TIP ONLY.
- ② NYLON OR POLYESTER, UL94V-0, BLACK.
- ③ BRASS PER MIL-C-50
- ④ GOLD PLATING PER MIL-G-45204, NICKEL PLATING PER QQ-N-290, TIN PLATING PER MIL-T-10727.
- ⑤ GOLD PLATED FOR A LENGTH OF 3.81 [.150] MIN FROM MATING END, 0.76µm [.000030] MIN GOLD IN MATED AREA. 3.05µm [.000120] MIN TIN-LEAD FOR A LENGTH OF 3.68 [.145] MIN FROM OPPOSITE END, BOTH OVER 1.27µm [.000050] MIN NICKEL.
- ⑥ GOLD PLATED FOR A LENGTH OF 3.81 [.150] MIN FROM MATING END, GOLD FLASH IN MATED AREA. 3.05µm [.000120] MIN TIN-LEAD FOR A LENGTH OF 3.68 [.145] MIN FROM OPPOSITE END, BOTH OVER 1.27µm [.000050] MIN NICKEL.

DO NOT SCALE PRINT. UNLESS SPECIFIED DIMENSIONS IN mm [INCHES]		DR 02/16/90 S.WELDON		NAME	
TOLERANCES - ON:		CHK 3-6-90 R.STONE		AMP INCORPORATED Harrisburg, Pa. 17105	
2 PLC DEC ± 0.13 [.005]		APPD 3-8-90 J.SWAIN		PLUG ASSEMBLY, SIZE 3, 25 POSN, ALL PLASTIC, RIGHT ANGLE, .590 SERIES, AMPLIMITE® III	
3 PLC DEC ± -		APPD 3-8-90 C.ROHDE		SIZE D	
ANGLES ± 2°		PRODUCT SPEC 108-1226		CAGE CODE 00779	
MATERIAL HOUSING: ② CONTACTS: ③		APPLICATION SPEC 114-40027		DRAWING NO 748826	
FINISH ④ CONTACTS: SEE TABLE		WEIGHT -		SCALE 4:1	
				SHEET 1 OF 1	