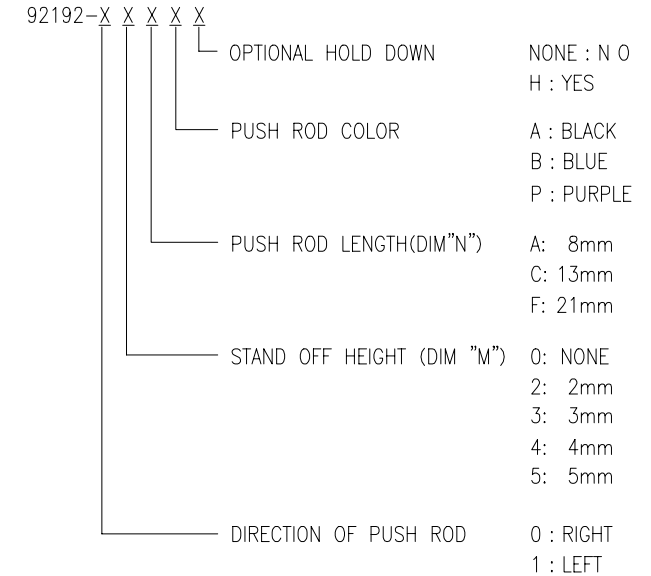


PRODUCT NO.
92192

REVISIONS				
REV	DESCRIPTION	ECN	BY	DATE
A	RELEASED	J30053	M.K	1/20/93
B	REVISED	J40163	M.K	5/28/94
C	REVISED	V40646	M.K	6/24/94
D	REVISED	V40840	M.K	7/5/94
E	REVISED	J40198	M.K	7/19/94
F	REVISED	V32113	M.K	12/22/94
G	REVISED	J40349	M.K	1/9/95
H	REVISED (ADDED-05CAH -13CA -13CAH)	J70134	K.S	5/22/97
J	REVISED (ADDED-12FA)	N90076	M.K	7/22/99
M	REVISED (ADDED"LF")	N05-0260	M.Z	11/09/05
N	REVISED (ADD -12CAH)	N07-0026	DT	1/29/07

PRODUCT NO.	STAND OFF(mm)	DIM "N" (mm)	PUSH ROD COLOR	HOLD DOWN	SHEET NO.
92192-XXXX					
00AA	0	8	BLACK	NONE	NO.2
00AAH	0	8	BLACK	YES	
00CA	0	13	BLACK	NONE	
00CAH	0	13	BLACK	YES	
00CB	0	13	BLUE	NONE	
00CBH	0	13	BLUE	YES	
00CP	0	13	PURPLE	NONE	
00CPH	0	13	PURPLE	YES	
00FA	0	21	BLACK	NONE	
00FAH	0	21	BLACK	YES	
02CA	2	13	BLACK	NONE	NO.3
02CB	2	13	BLUE	NONE	
04CA	4	13	BLACK	NONE	
05CA	5	13	BLACK	NONE	
05CAH	5	13	BLACK	YES	
10AA	0	8	BLACK	NONE	NO.4
10AAH	0	8	BLACK	YES	
10CA	0	13	BLACK	NONE	
10CAH	0	13	BLACK	YES	
10CB	0	13	BLUE	NONE	
10CBH	0	13	BLUE	YES	
10CP	0	13	PURPLE	NONE	
10CPH	0	13	PURPLE	YES	
10FA	0	21	BLACK	NONE	
10FAH	0	21	BLACK	YES	
12CA	2	13	BLACK	NONE	NO.5
12CAH	2	13	BLACK	YES	
12CB	2	13	BLUE	NONE	
12FA	2	21	BLACK	NONE	
13CA	3	13	BLACK	NONE	
13CAH	3	13	BLACK	YES	
14CA	4	13	BLACK	NONE	
15CA	5	13	BLACK	NONE	

PRODUCT NO.	STAND OFF(mm)	DIM "N" (mm)	PUSH ROD COLOR	HOLD DOWN	SHEET NO.
92192-XXXX					
△ 00AALF	0	8	BLACK	NONE	NO.2
△ 00AAHLF	0	8	BLACK	YES	
△ 00CALF	0	13	BLACK	NONE	
△ 00CAHLF	0	13	BLACK	YES	
△ 00CBLF	0	13	BLUE	NONE	
△ 00CBHLF	0	13	BLUE	YES	
△ 00CPLF	0	13	PURPLE	NONE	
△ 00CPHLF	0	13	PURPLE	YES	
△ 00FALF	0	21	BLACK	NONE	
△ 00FAHLF	0	21	BLACK	YES	
△ 02CALF	2	13	BLACK	NONE	NO.3
△ 02CBLF	2	13	BLUE	NONE	
△ 04CALF	4	13	BLACK	NONE	
△ 05CALF	5	13	BLACK	NONE	
△ 05CAHLF	5	13	BLACK	YES	
△ 10AALF	0	8	BLACK	NONE	NO.4
△ 10AAHLF	0	8	BLACK	YES	
△ 10CALF	0	13	BLACK	NONE	
△ 10CAHLF	0	13	BLACK	YES	
△ 10CBLF	0	13	BLUE	NONE	
△ 10CBHLF	0	13	BLUE	YES	
△ 10CPLF	0	13	PURPLE	NONE	
△ 10CPHLF	0	13	PURPLE	YES	
△ 10FALF	0	21	BLACK	NONE	
△ 10FAHLF	0	21	BLACK	YES	
△ 12CALF	2	13	BLACK	NONE	NO.5
△ 12CAHLF	2	13	BLACK	YES	
△ 12CBLF	2	13	BLUE	NONE	
△ 12FALF	2	21	BLACK	NONE	
△ 13CALF	3	13	BLACK	NONE	
△ 13CAHLF	3	13	BLACK	YES	
△ 14CALF	4	13	BLACK	NONE	
△ 15CALF	5	13	BLACK	NONE	



△
△
△
△
△

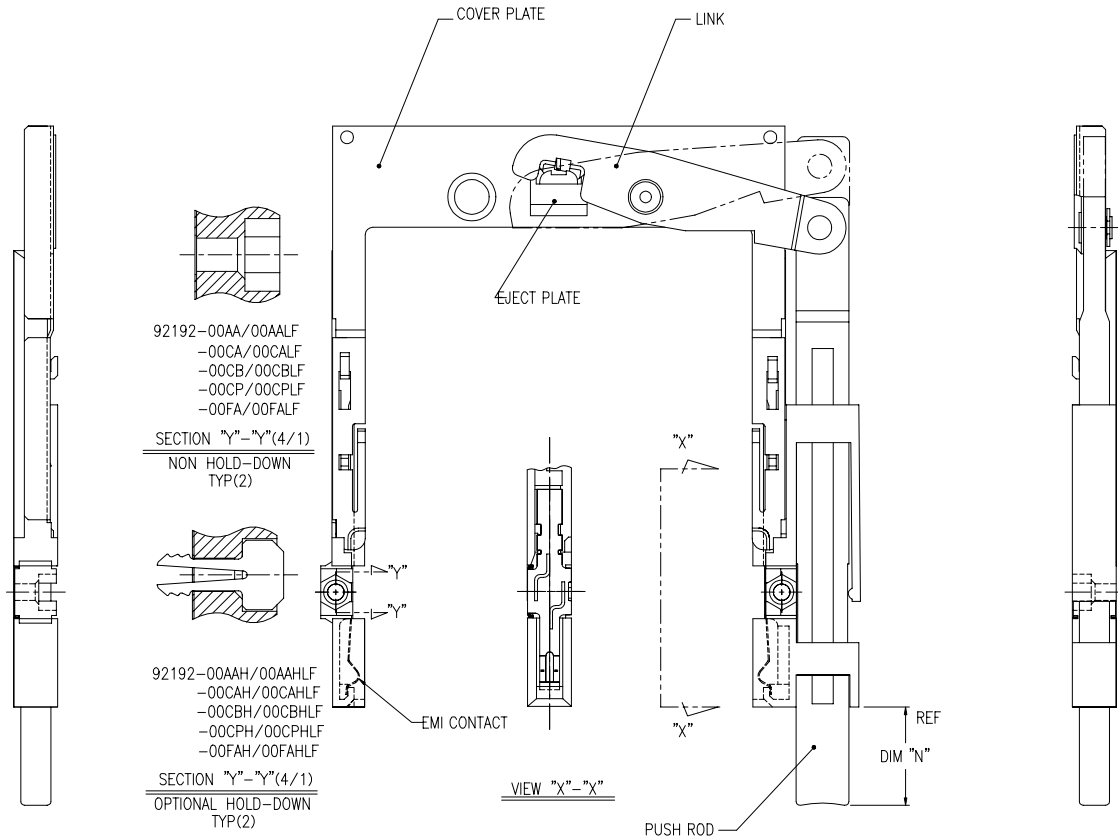
SHEET INDEX	ISSUE																			
	SH NO.																			
TOLERANCES UNLESS OTHERWISE SPECIFIED		MAT		DR	M. Hasegawa	DATE	7/22/99	CUSTOMER COPY		TITLE 68P EJECTOR HEADER TYPE I / II / III MECHANISM ASSY										
LINEAR		FINISH		ENGR	M. Kojima	7/22/99				SCALE SIZE DWG. NO. REV SHEET										
ANGLES				CHK						UNIT	MM	SCALE	C	DWG. NO.	92192	REV	N	SHEET	1 of 5	



DF-003A REV D
DO NOT SCALE PRINT THIS INFORMATION IS CONFIDENTIAL AND IS DISCLOSED TO YOU ON CONDITION THAT NO FURTHER DISCLOSURE IS MADE BY YOU TO OTHER THAN FCI PERSONNEL WITHOUT WRITTEN AUTHORIZATION FROM FCI JAPAN K.K.

PRODUCT NO.	
92192-00AA/00AALF	△
92192-00AAH/00AAHLF	△
92192-00CA/00CALF	△
92192-00CAH/00CAHLF	△
92192-00CB/00CBLF	△
92192-00CBH/00CBHLF	△
92192-00CP/00CPLF	△
92192-00CPH/00CPHLF	△
92192-00FA/00FALF	△
92192-00FAH/00FAHLF	△

REVISIONS				
REV	DESCRIPTION	ECN	BY	DATE
A	RELEASED	J30053	N.T	2/17/93
B	REVISED	J40163	M.K	5/26/94
C	REVISED	V40646	M.K	6/24/94
D	REVISED	V40840	M.K	7/ 5/94
E	REVISED	J40198	M.K	7/19/94
F	REVISED	V32113	M.K	12/21/94
G	REVISED	J40349	M.K	1/9/94
H	REVISED	N05-0280	M.Z	11/09/05
N				



92192-00AA/00AALF
 -00CA/00CALF
 -00CB/00CBLF
 -00CP/00CPLF
 -00FA/00FALF

SECTION "Y"-"Y"(4/1)
 NON HOLD-DOWN
 TYP(2)

92192-00AAH/00AAHLF
 -00CAH/00CAHLF
 -00CBH/00CBHLF
 -00CPH/00CPHLF
 -00FAH/00FAHLF

SECTION "Y"-"Y"(4/1)
 OPTIONAL HOLD-DOWN
 TYP(2)

VIEW "X"-"X"

NOTE

- EJECT PLATE MOVE ALONG INSIDE WALL OF COVER PLATE SMOOTHLY AFTER ASSEMBLING WITH HDR ASSY.
- MATERIAL
 - GUIDE : POLYPHTHARAMID UL94V-0 BLACK
 - PUSH ROD : FLAME RETARDANT UL94V-0 BLACK/BLUE
 - PLATE : STAINLESS
 - EMI CONTACT : PHOSPHOR BRONZE
 - HOLD-DOWN : BRASS
- FINISH
 - EMI CONTACT UNDER PLATING : 2.0 μ m MIN. Ni
 - CONTACT AREA : 0.5 μ m MIN. Au
- RECOMMENDED PCB HOLE (OPTIONAL HOLD-DOWN) : 2.3 \pm 0.1



SHEET INDEX	ISSUE SH NO.	TOLERANCES UNLESS OTHERWISE SPECIFIED		MAT	DR	DATE	CUSTOMER COPY
				SEE NOTE ②	J. Omata	12/21/94	
LINEAR				FINISH	M. Kajiwara		THIRD ANGLE PROJ
ANGLES				SEE NOTE ③			UNIT MM

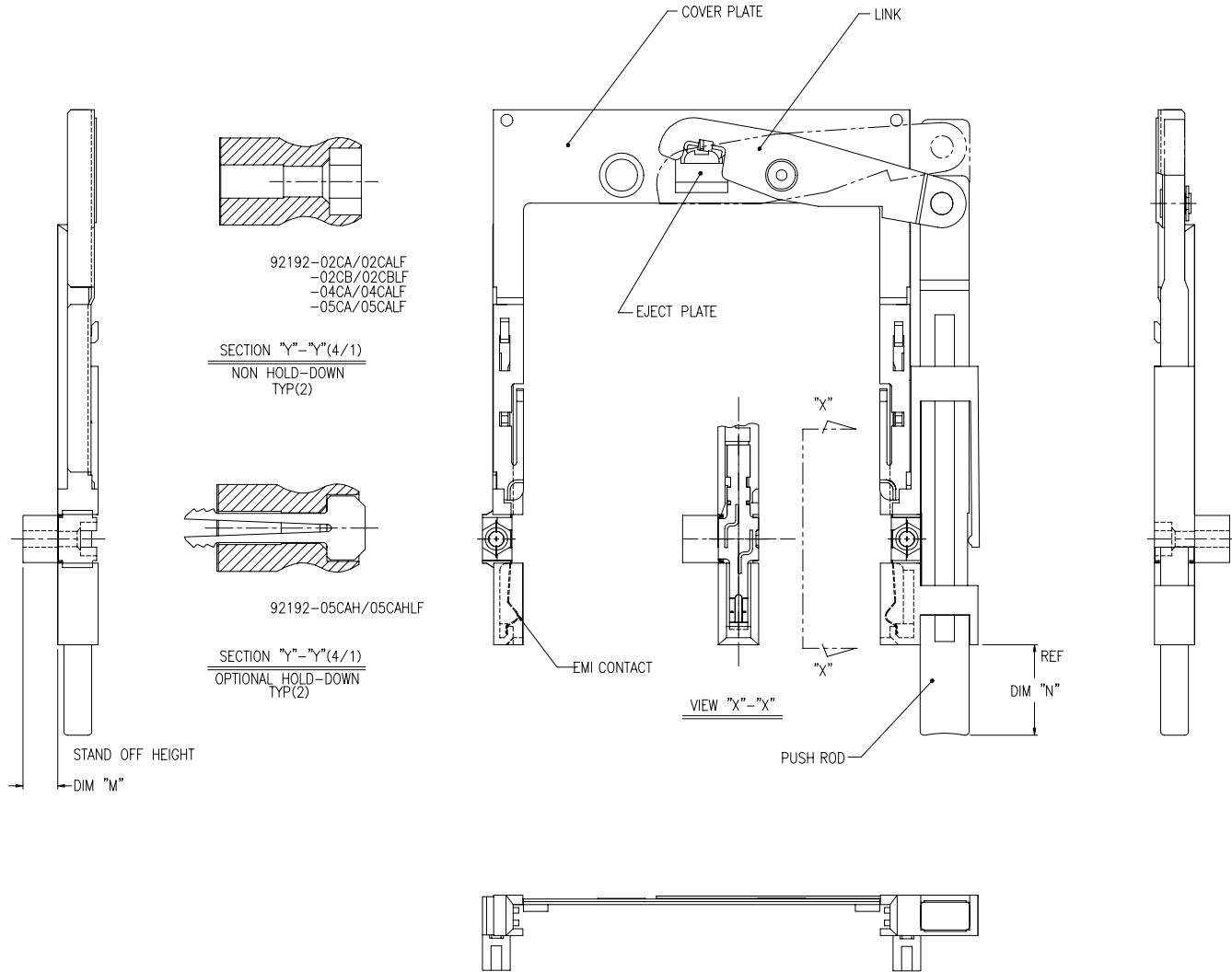
FCJ

TITLE: 68P EJECTOR HEADER TYPE 1/II/III MECHANISM ASSY

SCALE: 2/1 SIZE: C DWG. NO.: 92192 REV: N SHEET: 2 of

PRODUCT NO.	
92192-02CA/02CALF	H
92192-02CB/02CBLF	H
92192-04CA/04CALF	H
92192-05CA/05CALF	H
92192-05CAH/05CAHLF	G H

REVISIONS				
REV	DESCRIPTION	ECN	BY	DATE
A	RELEASED	J30053	N.T	2/17/'93
B	REVISED	J40163	M.K	5/26/'94
C	REVISED	V40840	M.K	7/ 5/'94
D	REVISED	J40198	M.K	7/19/'94
E	REVISED	V32113	M.K	12/20/'94
F	REVISED	J40349	M.K	1/9/'95
G	REVISED (ADDED-05CAH)	J70134	K.S	8/8/'97
H	REVISED (ADDED"LF")	N05-0260	MZ	11/09/05
N				



NOTE

- EJECT PLATE MOVE ALONG INSIDE WALL OF COVER PLATE SMOOTHLY AFTER ASSEMBLING WITH HDR ASSY.

② MATERIAL

- GUIDE : POLYPHTHARAMID UL94V-0 BLACK
- PUSH ROD : FLAME RETARDANT UL94V-0 BLACK
- PLATE : STAINLESS
- EMI CONTACT : PHOSPHOR BRONZE
- STAND OFF : ZINC ALLOYS DIE CASTING

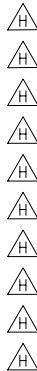
③ FINISH

- EMI CONTACT UNDER PLATING : 2.0 μ m MIN. Ni
- CONTACT AREA : 0.5 μ m MIN. Au
- STAND OFF : 3~5 μ m Ni OVER 5~10 μ m Cu.

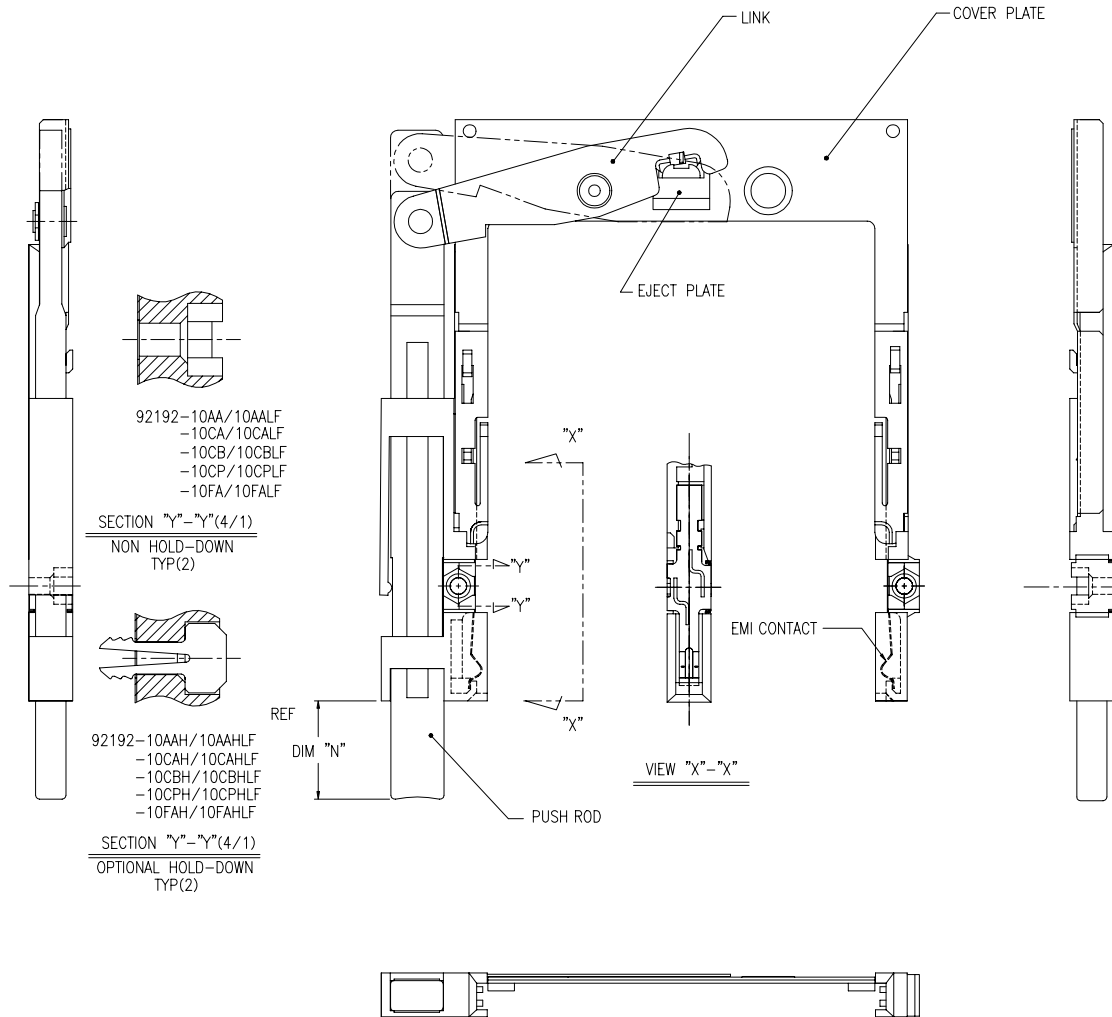
SHEET INDEX	ISSUE SH NO.	MAT SEE NOTE ②	DR <i>J. Ono</i> DATE 8/8/'97	CUSTOMER COPY	TITLE
LINEAR		FINISH SEE NOTE ③	ENGR <i>K. Suguki</i> 8/8/'97	THIRD ANGLE PROJ	68P EJECTOR HEADER TYPE I / II / III MECHANISM ASSY
ANGLES			APPD	UNIT MM	SCALE 2/1 SIZE C DWG. NO. 92192 REV N SHEET 3 of 3



PRODUCT NO.
92192-10AA/10AALF
92192-10AAH/10AAHLF
92192-10CA/10CALF
92192-10CAH/10CAHLF
92192-10CB/10CBLF
92192-10CBH/10CBHLF
92192-10CP/10CPLF
92192-10CPH/10CPHLF
92192-10FA/10FALF
92192-10FAH/10FAHLF



REVISIONS				
REV	DESCRIPTION	ECN	BY	DATE
A	RELEASED	J30053	N.T	2/17/93
B	REVISED	J40163	M.N	5/26/94
C	REVISED	V40646	M.K	6/24/94
D	REVISED	V40840	M.K	7/ 5/94
E	REVISED	J40198	M.K	7/19/94
F	REVISED	V32113	M.K	12/21/94
G	REVISED	J40349	M.K	1/9/95
H	REVISED	N05-0280	M.Z	11/09/05
N				



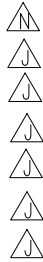
NOTE

- EJECT PLATE MOVE ALONG INSIDE WALL OF COVER PLATE SMOOTHLY AFTER ASSEMBLING WITH HDR ASSY.
- MATERIAL
 - GUIDE : POLYPHTHARAMID UL94V-0 BLACK
 - PUSH ROD : FLAME RETARDANT UL94V-0 BLACK/BLUE
 - PLATE : STAINLESS
 - EMI CONTACT : PHOSPHOR BRONZE
 - HOLD-DOWN : BRASS
- FINISH
 - EMI CONTACT UNDER PLATING : 2.0 μ m MIN. Ni
 - CONTACT AREA : 0.5 μ m MIN. Au
- RECOMMENDED PCB HOLE (OPTIONAL HOLD-DOWN) : 2.3 \pm 0.1

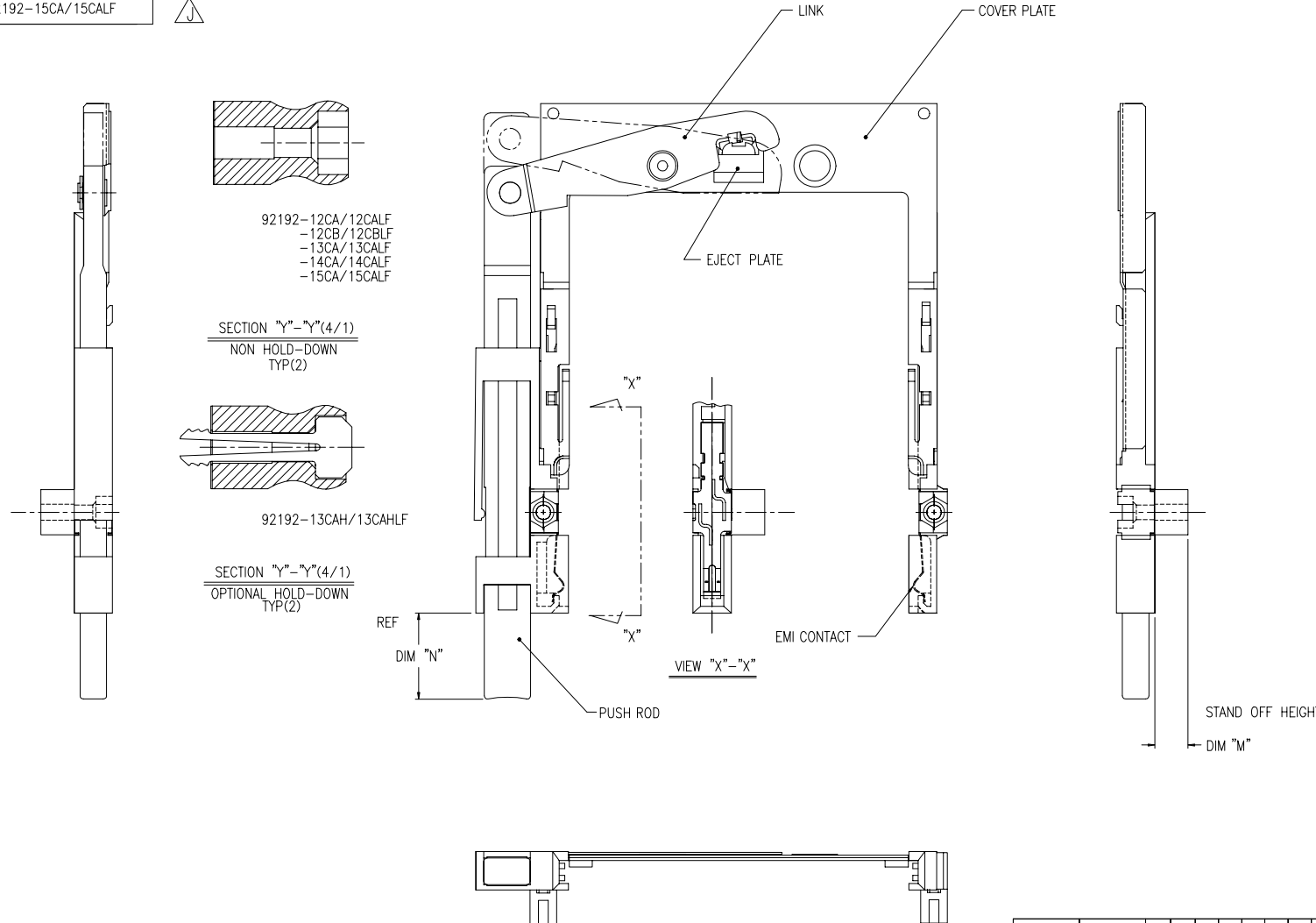
SHEET INDEX	ISSUE	SH NO.	MAT	DR	ENGR	CHK	APPD	DATE	CUSTOMER COPY	TITLE	SCALE	SIZE	DWG. NO.	REV	SHEET
			SEE NOTE ②	J. Omaki	M. Kojima			12/21/94		68P EJECTOR HEADER TYPE I / II / III MECHANISM ASSY	2/1	C	92192	N	4 of 4
LINEAR			FINISH							THIRD ANGLE PROJ					
ANGLES			SEE NOTE ③							UNIT	MM				



PRODUCT NO.
92192-12CAH/12CAHLF
92192-12CB/12CBLF
92192-12FA/12FALF
92192-13CA/13CALF
92192-13CAH/12CAHLF
92192-14CA/14CALF
92192-15CA/15CALF



REVISIONS				
REV	DESCRIPTION	ECN	BY	DATE
A	RELEASED	J30053	N.T	2/17/93
B	REVISED	J40163	M.K	5/26/94
C	REVISED	V40840	M.K	7/ 5/94
D	REVISED	J40198	M.K	7/19/94
E	REVISED	V32113	M.K	12/20/94
F	REVISED	J40349	M.K	1/9/95
G	REVISED (ADDED-13CA -13CAH)	J70134	K.S	8/8/97
H	REVISED (ADDED-12FA)	N90076	M.K	7/22/99
J	REVISED (ADDED"LF")	N05-0260	MZ	11/09/05
N				



NOTE

1. EJECT PLATE MOVE ALONG INSIDE WALL OF COVER PLATE SMOOTHLY AFTER ASSEMBLING WITH HDR ASSY.

② MATERIAL

GUIDE : POLYPHTHARAMID UL94V-0 BLACK
 PUSH ROD : FLAME RETARDANT UL94V-0 BLACK
 PLATE : STAINLESS
 EMI CONTACT : PHOSPHOR BRONZE
 STAND OFF : ZINC ALLOYS DIE CASTING

③ FINISH

EMI CONTACT
 UNDER PLATING : 2.0µm MIN. Ni
 CONTACT AREA : 0.5µm MIN. Au
 STAND OFF : 3~5µm Ni OVER 5~10µm Cu.

DF-003A REV D

DO NOT SCALE PRINT THIS INFORMATION IS CONFIDENTIAL AND IS DISCLOSED TO YOU ON CONDITION THAT NO FURTHER DISCLOSURE IS MADE BY YOU TO OTHER THAN FCI PERSONNEL WITHOUT WRITTEN AUTHORIZATION FROM FCI JAPAN K.K.

SHEET INDEX	ISSUE										
	SH NO.										
	TOLERANCES UNLESS OTHERWISE SPECIFIED	MAT	DR	DATE	CUSTOMER COPY						
		SEE NOTE ②	M. Hasegawa	7/22/99							
		5ft ②#11	ENGR								
			M. Kojima	7/22/99							
		FINISH	CHK		THIRD ANGLE PROJ						
		SEE NOTE ③									
		5ft ③#11	APPD		UNIT						
					MM						
					INCH						
ANGLES											



TITLE 68P EJECTOR HEADER TYPE I / II / III MECHANISM ASSY

SCALE 2/1 SIZE C DWG. NO. 92192 REV N SHEET 5 OF 5