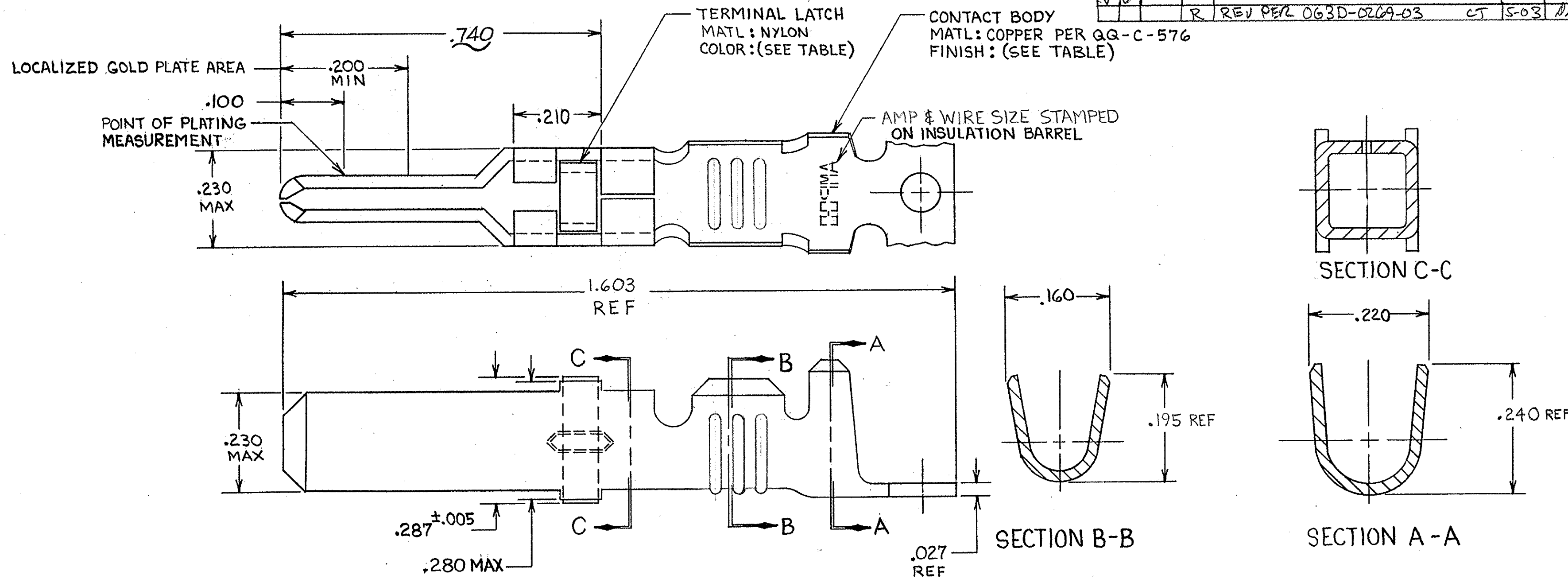


THIS DRAWING IS UNPUBLISHED. RELEASED FOR PUBLICATION, 19  
 © COPYRIGHT 19 BY AMP INCORPORATED, HARRISBURG, PA. ALL INTERNATIONAL RIGHTS RESERVED. AMP PRODUCTS MAY BE COVERED BY U.S. AND FOREIGN PATENTS AND/OR PATENTS PENDING.

REVISIONS						
P	F	ZONE	LTR	DESCRIPTION	DATE	APPROVED
✓	✓		L	REDRAWN & REVISED PER ECN R-1451	9-30-85	REP- <i>[Signature]</i>
✓	✓		M	REV. / ECN R-1946	3-4-86	NPN SLB
✓	✓		N	OBSOLETE -3 PER R-2760	3-4-87	SDG SLB
✓	✓		P	ADDED -7 PER DF5552 & NPR 91-0301	10-25-91	PY ABW
✓	✓		R	REV PER L 063D-0209-03	5-03	DRE



- 1. REELED FOR USE WITH STANDARD APPLICATORS.
- 2. REELED FOR USE WITH HEAVY DUTY MINI-APPLICATORS.
- 3. PLATED WITH .000100 MIN SILVER PER QQ-S-365.
- 4. PLATED WITH .000015 MIN GOLD PER MIL-G-45204 IN THE LOCALIZED GOLD PLATE AREA, GOLD FLASH ON THE REMAINDER, OVER .000030 MIN NICKEL PER QQ-N-290.
- 5. PLATED WITH .000030 MIN GOLD PER MIL-G-45204 IN THE LOCALIZED GOLD PLATE AREA, GOLD FLASH ON THE REMAINDER, OVER .000030 MIN NICKEL PER QQ-N-290.
- 6. PLATED WITH .000050 MIN 93-7% TIN-LEAD ALLOY OVER .000030 MIN NICKEL PER QQ-N-290.
- 7. WIRE RANGE = 12-16 AWG.
- 8. INSULATION RANGE = .140 - .165 DIA.
- 9. PLATED TIN (NO LEAD) .000050 MIN THK PER ASTM-B-545 OVER NICKEL .000030 MIN THK PER QQ-N-290.

BLACK	9	66262-5	66256-9
BLACK	9	66262-5	66256-8
NATURAL	3	66262-4	66256-7
NATURAL	3	66262-4	66256-6
BLACK	6	66262-1	66256-5
BLACK	5	66262-2	66256-4
BLACK	4	<del>66262-3</del>	66256-3
BLACK	5	66262-2	66256-2
BLACK	6	66262-1	66256-1
TERMINAL LATCH COLOR	FINISH	L. P. ASS'Y P/N REF	STRIP ASSY P/N

UNLESS OTHERWISE SPECIFIED DIMENSIONS ARE IN INCHES. TOLERANCES ON: DECIMALS ±.010 ANGLES ±	CONTRACT NO		AMP INCORPORATED Harrisburg, Pa. 17105	
	DR <i>Rich Rohlbaugh</i> 9-30-85 CHG <i>J. P. Lawrence</i> 10-25-85 APPD <i>[Signature]</i> APPD <i>[Signature]</i> 10-25-85 DSGN APPD <i>[Signature]</i> 10-28-85 OTHER APPD			
MATERIAL SEE CALLOUT	SIZE C	FSCM NO 00779	DRAWING NO 66256	
FINISH SEE DASH NO	SCALE NTS		SHEET	