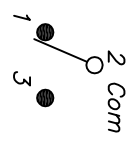


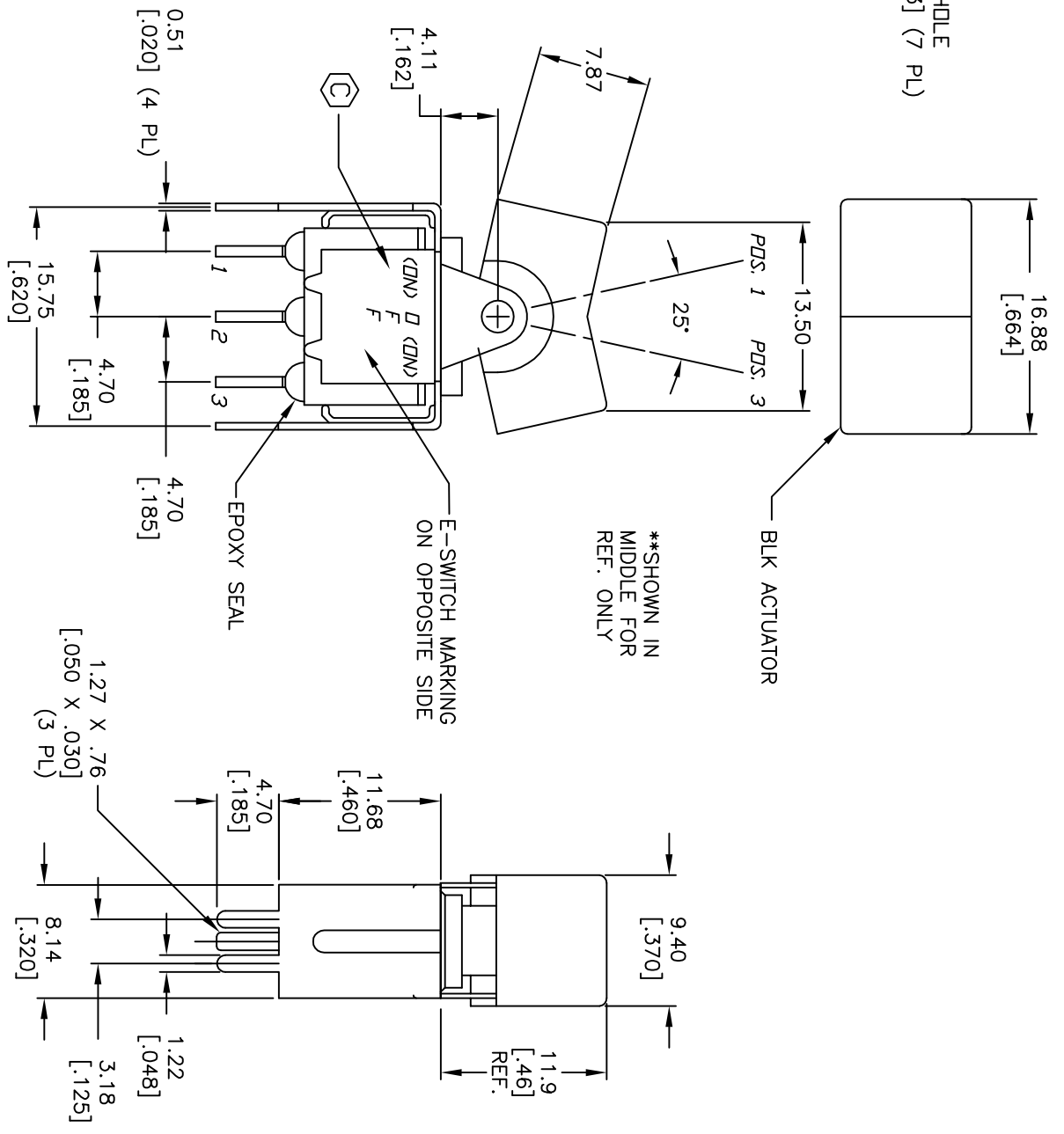
RECOMMENDED PCB LAYOUT
SCALE 2:1



CIRCUIT: SPST

SWITCH FUNCTION		
PDS. 1	PDS. 2	PDS. 3
<DN>	DFF	<DN>
2-3	OPEN	2-1

() =Momentary



- NOTES:
1. ALL DIMENSIONS IN MM [INCH]
 2. GENERAL TOLERANCE: X.X=±0.4
X.XX=±0.25
 3. TERM. NOS. FOR REF. ONLY
 4. RATING: 5A@ 120V AC or 28V DC;
2A@ 250V AC
 5. MATERIAL: FIXED TERMINAL & MOVING CONTACT
Copper Alloy w/SILVER PLATING
 6. CONTACT RESISTANCE: 10mILLI Ohms max initial
@2-4VDC, 100mA for AG & AU
 7. ELECTRICAL LIFE: 50,000 make-and-break
cycles at full load.
 8. INSULATION RESISTANCE: 1,000M ohm min.
 9. DIELECTRIC STRENGTH: 1000V RMS @sea level
 10. OPERATING TEMP.: -30°C to 85°C
 11. 2002/95/EC (ROHS) COMPLIANT

C	18708	CORRECT FUNCTION MARK ON BDDY	11/9/09	BLR	TITLE		E-SWITCH®		LAMB INDUSTRIES		
B	11603	REVISED TO ADD COLOR BLACK	8/7/01	CJB	300 SP-4 J1 BLK V52 Q E		SCALE 2:1		DATE 11/9/09		
REV.	ECN NO.	DESCRIPTION	DATE	CHKD	DR	DWG	REV				
		THE INFORMATION CONTAINED IN THIS DOCUMENT IS PROPRIETARY TO E-SWITCH AND IS NOT TO BE COPIED OR TRANSMITTED			BLR	T314014	C				